



**MOTION-K**  
모션케이



경기도 안산시 단원구 산단로 19번길 180.  
101동 2층 4호  
T E L : 070-8292-5130  
F A X : 031-935-0997  
Mobile : 010-4723-5130  
E-mail : motion-k@motion-k.com

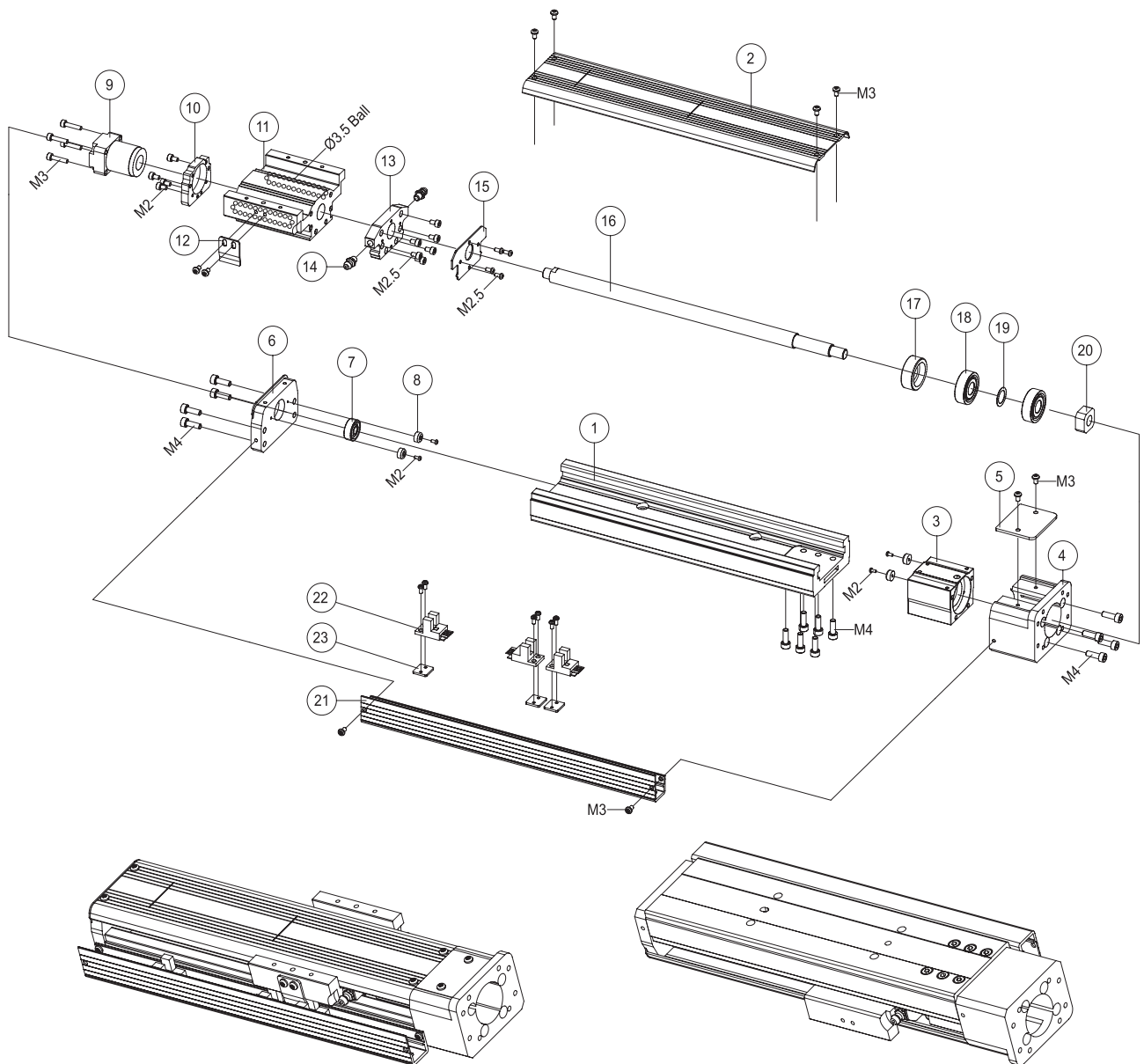
대표 김 남 형

  
**OPEN Type**



# 제품 분해도 및 부품 이름 (Structure and Parts name)

OPEN 직렬 OPEN Straight



No.	PART NAME	MATERIAL	Q'TY
1	Out Rail Body	AL6061	1
2	Out Rail Cover	AL6061	1
3	Main Housing	AL6061	1
4	Motor Bracket	AL6061	1
5	PC Window	PC	1
6	End Housing	AL6061	1
7	Bearing 606	-	1
8	Stopper	Urethane	4
9	Ball Screw Nut	-	1
10	Ball Screw Nut Plate	S41C	1
11	Carrier Block	AL6061	1
12	Sensor Dog	SUS	1

No.	PART NAME	MATERIAL	Q'TY
13	Ball Uturn Cover	POLYAMIDE	1
14	Grease Nipples	C3604BD	2
15	Oil Cover	SUS	1
16	Ball Screw Shaft	-	1
17	Bearing Nut	-	1
18	Bearing	-	2
19	Bearing Spacer	SUS	1
20	Lock Nut	-	1
21	Sensor Rail	AL6061	1
22	Sensor	-	3
23	Sensor Bracket	S41C	3

# KGB Actuator

## KGB030B-SS

### Common Specifications | 공통사양

Body Size(mm)	KGB030B
Repeatability(mm)	전조: $\pm 0.005$ , 연삭: $\pm 0.003$
Ball Screw	$\varnothing 6$
Robot Color	Black
Life in traveled distance	15000km or 15000hr

Motor	28각 스텝핑모터	
Ball Screw( $\varnothing \times$ Lead)	0601	0606
Payload(Hor. kg)	3.0	2.5
Payload(Ver. kg)	2.0	2.0
Max Speed(mm/s)	50	300

※ 표준에서 벗어난 모터 사용에 대해서는 협의가 필요합니다.

※ Consultation is required for use of motors outside the standard

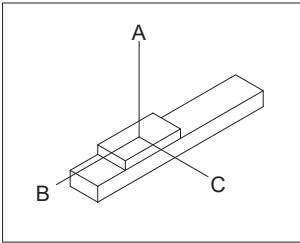
### Max Speed by Stroke | 이송거리별 최고속도 / Weight | 무게

Ball Screw		Stroke(mm) & Speed(mm/sec)				
DIA	Lead	25st	50st	75st	100st	150st
$\varnothing 06$	1			50		
	6			300		
Weight Without Motor(kg)	S(직)	0.3	0.5	0.7	0.9	1.1

※ 제품의 치수, 사용조건 및 사양등은 변경될 수 있습니다. Dimension of the product, operating conditions and specifications can be changed.

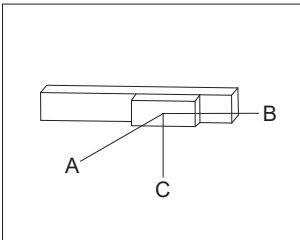
### Allowable Overhang Distance(mm) | 허용 이격 거리

#### Horizontal use | 수평취부



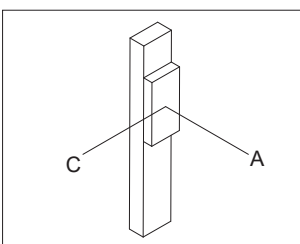
Lead	Payload(kg)	A	B	C
1	1.0	150	150	150
	1.5	100	100	100
	2.0	80	80	80
6	1.0	120	120	120
	1.5	80	90	90
	2.0	50	80	80

#### Wall Mount use | 수평취부



Lead	Payload(kg)	A	B	C
1	1.0	150	150	150
	1.5	120	120	120
	2.0	80	80	100
6	1.0	150	150	150
	1.5	120	120	120
	2.0	80	80	80

#### Vertical use | 수직취부



Lead	Payload(kg)	A	B	C
1	1.0	120	—	120
	1.5	100	—	100
	2.0	60	—	60
6	1.0	100	—	100
	1.5	75	—	75
	2.0	50	—	50



# KGB Actuator

## KGB040B-SS

### Common Specifications | 공통사양

Body Size(mm)	KGB040B
Repeatability(mm)	전조: $\pm 0.005$ , 연삭: $\pm 0.003$
Ball Screw	$\varnothing 8$
Robot Color	Black
Life in traveled distance	15000km or 15000hr

AC Servo Motor(W)	50		100	
Ball Screw( $\varnothing \times$ Lead)	0802	0805※	0802	0805※
Payload(Hor. kg)	6.0	5.0	8.0	7.0
Payload(Ver. kg)	3.5	3.0	7.0	5.0
Max Speed(mm/s)	100	250	100	250

※ 표준에서 벗어난 모터 사용에 대해서는 협의가 필요합니다. Consultation is required for use of motors outside the standard  
 ※ KGB040B 연삭 표준 볼 스크류는 G0802와 G0804 입니다. The standard grinding ball screw of KGB040B are G0802 and G0804

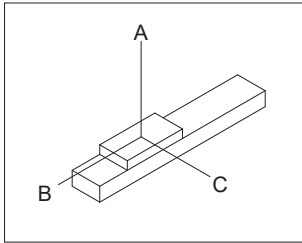
### Max Speed by Stroke | 이송거리별 최고속도 / Weight | 무게

Ball Screw		Stroke(mm) & Speed(mm/sec)				
DIA	Lead	50st	100st	150st	200st	250st
$\varnothing 08$	2	100				
	5	250				
Weight Without Motor(kg)	S(직)	0.8	0.9	1.1	1.3	1.5

※ 제품의 치수, 사용조건 및 사양등은 변경될 수 있습니다. Dimension of the product, operating conditions and specifications can be changed.

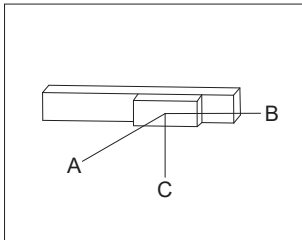
### Allowable Overhang Distance(mm) | 허용 이격 거리

#### Horizontal use | 수평취부



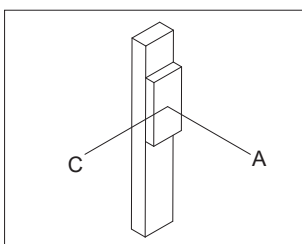
Lead	Payload(kg)	A	B	C
2	2.0	300	250	250
	2.5	250	200	200
	3.0	150	150	150
5	2.0	280	230	230
	2.5	230	180	180
	3.0	140	120	120

#### Wall Mount use | 수평취부



Lead	Payload(kg)	A	B	C
2	2.0	250	250	250
	2.5	200	200	200
	3.0	150	150	150
5	2.0	240	240	250
	2.5	190	180	200
	3.0	140	130	150

#### Vertical use | 수직취부

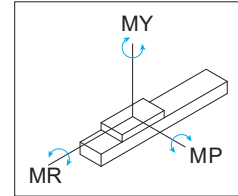


Lead	Payload(kg)	A	B	C
2	1.0	300	—	300
	2.0	200	—	200
	3.0	150	—	150
5	1.0	280	—	280
	2.0	230	—	200
	3.0	180	—	180

# KGB040B-SS

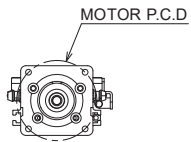
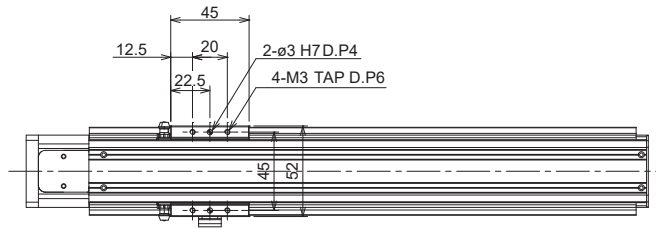


## Static Allowable Moment(N·m) 정적 허용 모멘트

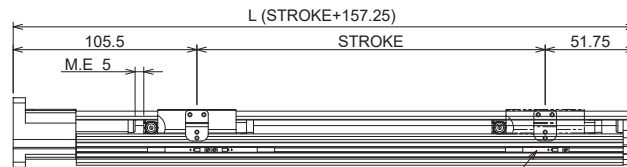


Mp	My	Mr
37	37	115

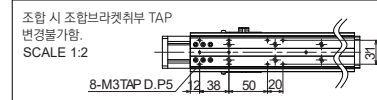
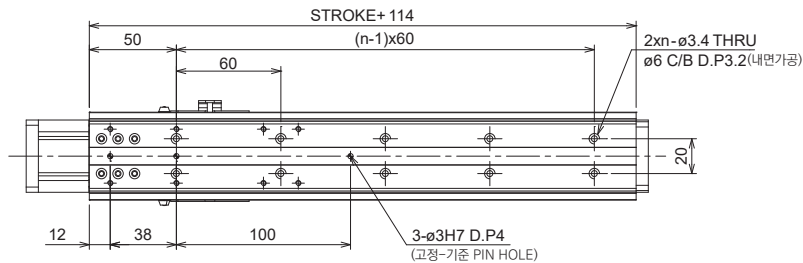
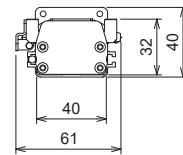
## Dimension [mm] | 치수도



\* 모터에 따라 P.C.D 및 전장이 변경될 수 있습니다.  
\* 모터부착도면 필요 시, 별도로 도면요청 바랍니다.



무점점 MAGNET SENSOR 3EA  
외부표시 - On시 LED발광



# KGB Actuator

## KGB040B-PL/PR/PB

### Common Specifications | 공통사양

Body Size(mm)	KGB040B
Repeatability(mm)	전조: $\pm 0.005$ , 연삭: $\pm 0.003$
Ball Screw	$\varnothing 8$
Robot Color	Black
Life in traveled distance	15000km or 15000hr

AC Servo Motor(W)	50		100	
Ball Screw( $\varnothing \times$ Lead)	0802	0805※	0802	0805※
Payload(Hor. kg)	5.0	4.0	7.0	6.0
Payload(Ver. kg)	3.0	2.4	6.0	4.0
Max Speed(mm/s)	100	250	100	250

※ 표준에서 벗어난 모터 사용에 대해서는 협의가 필요합니다. Consultation is required for use of motors outside the standard  
 ※ KGB040B 연삭 표준 볼 스크류는 G0802와 G0804 입니다. The standard grinding ball screw of KGB40B are G0802 and G0804

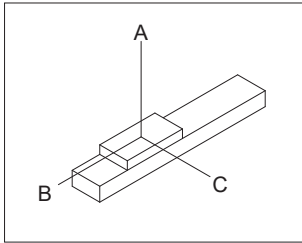
### Max Speed by Stroke | 이송거리별 최고속도 / Weight | 무게

Ball Screw		Stroke(mm) & Speed(mm/sec)				
DIA	Lead	50st	100st	150st	200st	250st
$\varnothing 8$	2	100				
	5	250				
Weight Without Motor(kg)	P(병)	1.0	1.1	1.3	1.5	1.7

※ 제품의 치수, 사용조건 및 사양등은 변경될 수 있습니다. Dimension of the product, operating conditions and specifications can be changed.

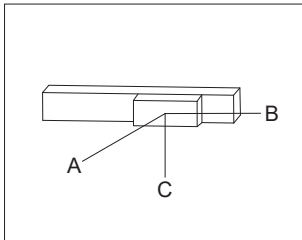
### Allowable Overhang Distance(mm) | 허용 이격 거리

#### Horizontal use | 수평취부



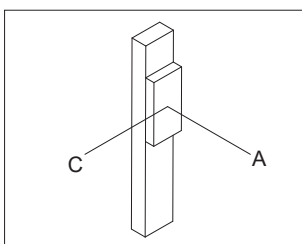
Lead	Payload(kg)	A	B	C
2	2.0	300	250	250
	2.5	250	200	200
	3.0	150	150	150
5	2.0	280	230	230
	2.5	230	180	180
	3.0	140	120	120

#### Wall Mount use | 수평취부



Lead	Payload(kg)	A	B	C
2	2.0	250	250	250
	2.5	200	200	200
	3.0	150	150	150
5	2.0	240	240	250
	2.5	190	180	200
	3.0	140	130	150

#### Vertical use | 수직취부

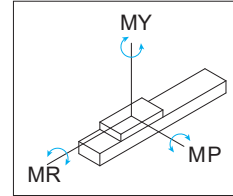


Lead	Payload(kg)	A	B	C
2	1.0	300	—	300
	2.0	200	—	200
	3.0	150	—	150
5	1.0	280	—	280
	2.0	230	—	200
	3.0	180	—	180

# KGB040B-PL/PR

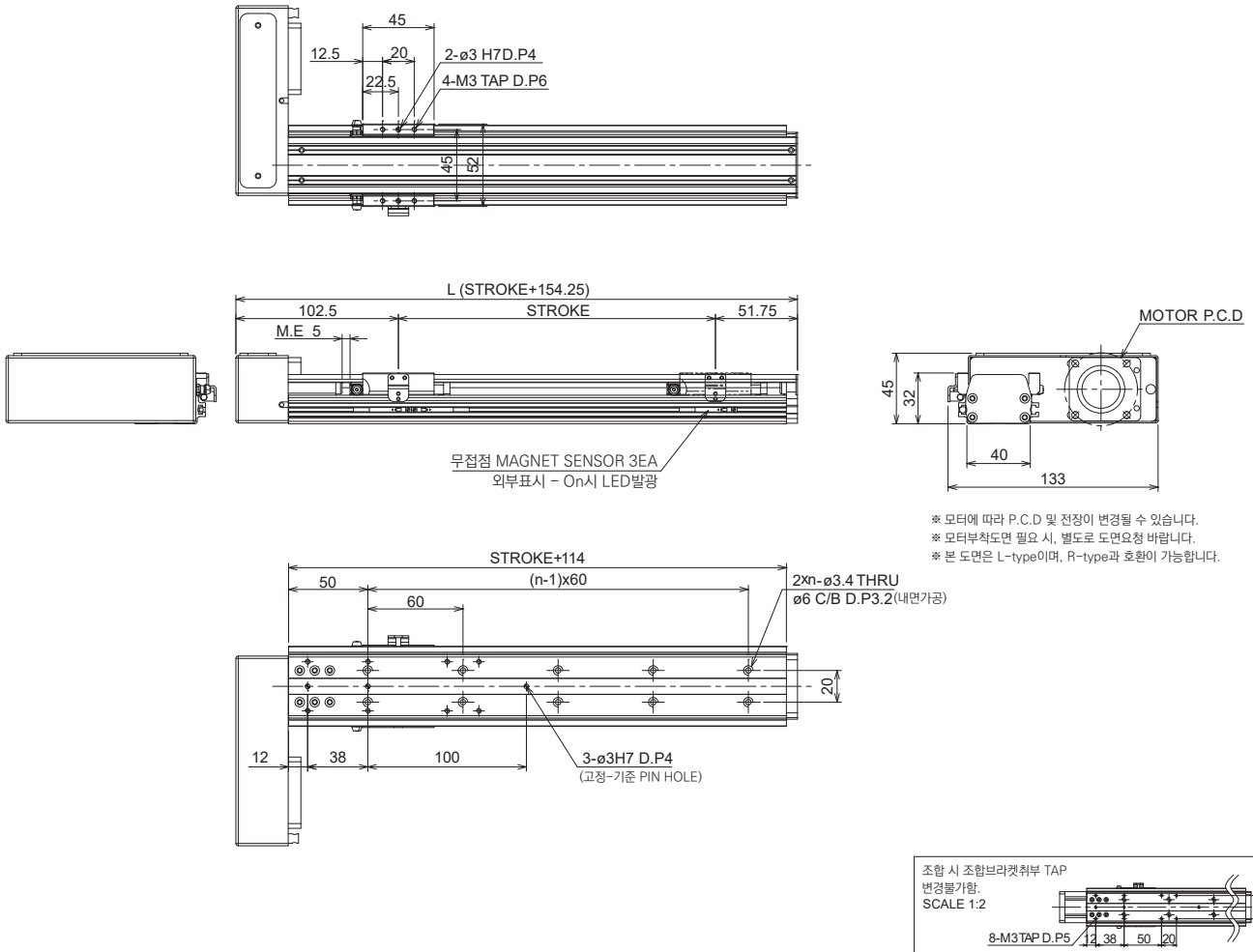


## Static Allowable Moment(N·m) 정적 허용 모멘트



Mp	My	Mr
37	37	115

## Dimension [mm] | 치수도

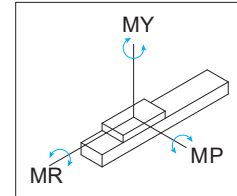




# KGB040B-PB

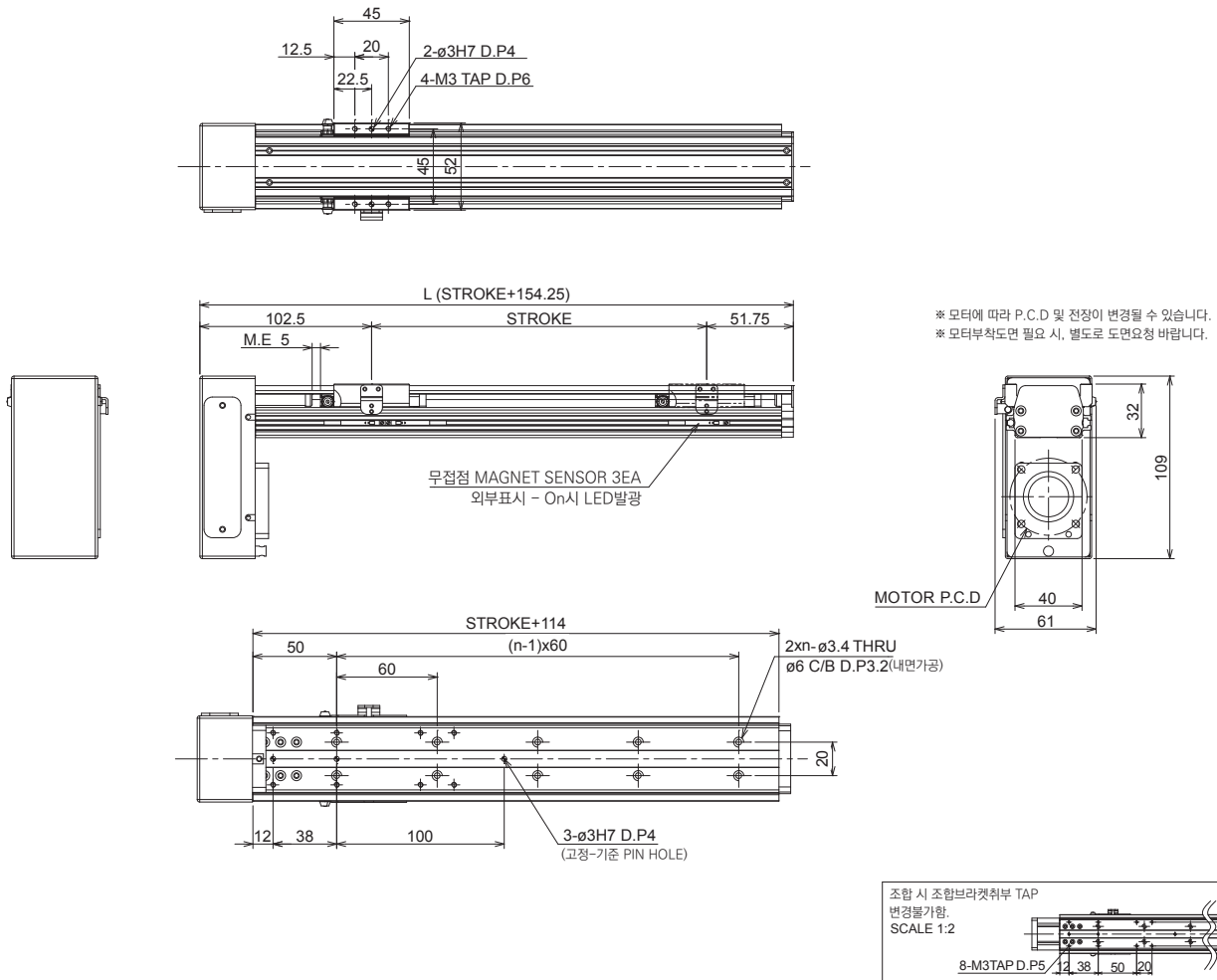


## Static Allowable Moment(N·m) 정적 허용 모멘트



Mp	My	Mr
37	37	115

## Dimension [mm] | 치수도



## Common Specifications | 공통사양

Body Size(mm)	KGB050B
Repeatability(mm)	전조: ±0.005, 연삭: ±0.003
Ball Screw	Ø12
Robot Color	Black
Life in traveled distance	15000km or 15000hr

AC Servo Motor(W)	100	
Ball Screw(ØxLead)	1205	1210
Payload(Hor. kg)	17.0	15.0
Payload(Ver. kg)	8.0	6.0
Max Speed(mm/s)	250	500

※ 표준에서 벗어난 모터 사용에 대해서는 협의가 필요합니다.  
 ※ Consultation is required for use of motors outside the standard

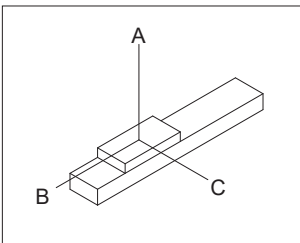
## Max Speed by Stroke | 이송거리별 최고속도 / Weight | 무게

Ball Screw		Stroke(mm) & Speed(mm/sec)						
DIA	Lead	50st	100st	150st	200st	300st	400st	500st
Ø12	5	250						
	10	500						
Weight Without Motor(kg)	S(직)	1.2	1.3	1.4	1.6	1.9	2.2	2.5

※ Z축 리드 20 적용 시 협의 필요합니다  
 ※ Consultation is required when applying Z-axis lead 20

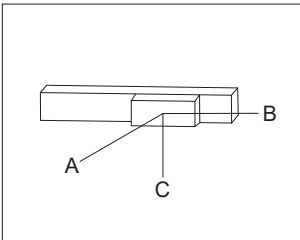
## Allowable Overhang Distance(mm) | 허용 이격 거리

### Horizontal use | 수평취부



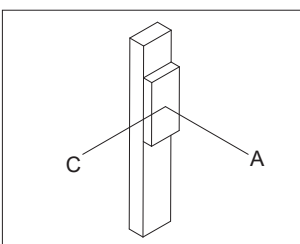
Lead	Payload(kg)	A	B	C
5	4.0	250	200	200
	6.0	200	150	150
	8.0	150	100	100
10	4.0	230	180	180
	6.0	180	140	140
	8.0	130	100	100

### Wall Mount use | 수평취부



Lead	Payload(kg)	A	B	C
5	3.0	200	200	300
	5.0	170	150	250
	8.0	80	80	200
10	3.0	200	200	300
	5.0	150	150	250
	8.0	80	80	150

### Vertical use | 수직취부

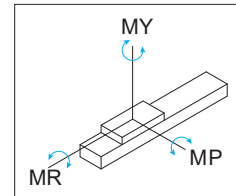


Lead	Payload(kg)	A	B	C
5	3.0	250	—	250
	4.0	200	—	200
	6.0	150	—	150
10	2.0	200	—	200
	4.0	175	—	175
	5.0	150	—	150

# KGB050B-SS

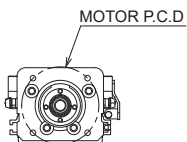
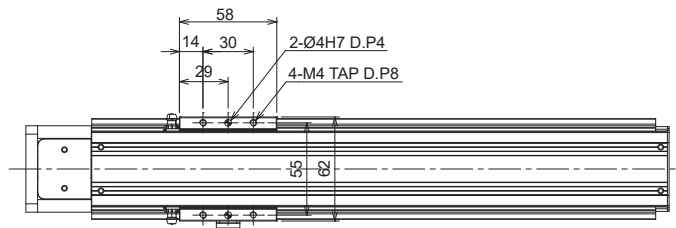


## Static Allowable Moment(N·m) 정적 허용 모멘트

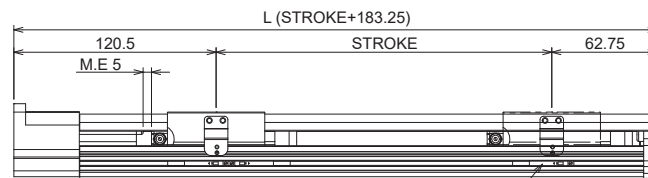


Mp	My	Mr
75	75	240

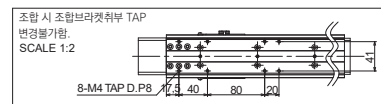
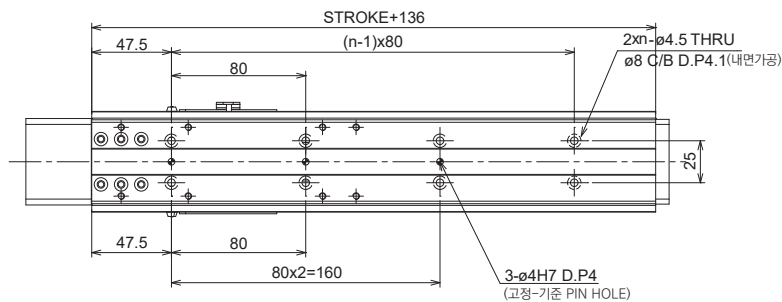
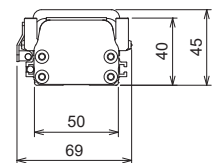
## Dimension [mm] | 치수도



\* 모터에 따라 P.C.D 및 전장이 변경될 수 있습니다.  
\* 모터부착도면 필요 시, 별도로 도면요청 바랍니다.



무접점 MAGNET SENSOR 3EA  
외부표시 - On시 LED발광



조립 시 조립브래킷뒤부 TAP  
변경불가함.  
SCALE 1:2

## Common Specifications | 공통사양

Body Size(mm)	KGB050B
Repeatability(mm)	전조: ±0.005, 연삭: ±0.003
Ball Screw	Ø12
Robot Color	Black
Life in traveled distance	15000km or 15000hr

AC Servo Motor(W)	100	
Ball Screw(ØxLead)	1205	1210
Payload(Hor. kg)	16.0	14.0
Payload(Ver. kg)	6.0	4.0
Max Speed(mm/s)	250	500

※ 표준에서 벗어난 모터 사용에 대해서는 협의가 필요합니다.  
 ※ Consultation is required for use of motors outside the standard

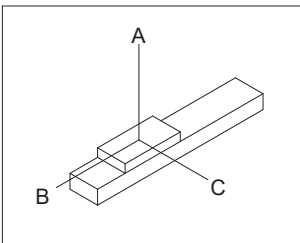
## Max Speed by Stroke | 이송거리별 최고속도 / Weight | 무게

Ball Screw		Stroke(mm) & Speed(mm/sec)						
DIA	Lead	50st	100st	150st	200st	300st	400st	500st
Ø12	5	250						
	10	500						
Weight Without Motor(kg)	P(병)	1.4	1.5	1.6	1.8	2.1	2.4	2.7

※ Z축 리드 20 적용 시 협의 필요합니다  
 ※ Consultation is required when applying Z-axis lead 20

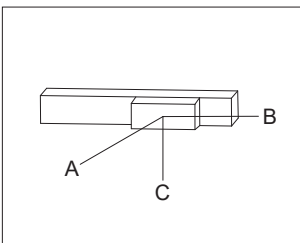
## Allowable Overhang Distance(mm) | 허용 이격 거리

### Horizontal use | 수평취부



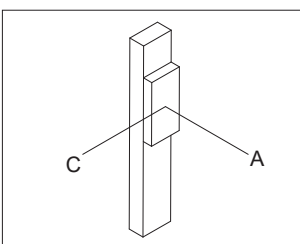
Lead	Payload(kg)	A	B	C
5	4.0	250	200	200
	6.0	200	150	150
	8.0	150	100	100
10	4.0	230	180	180
	6.0	180	140	140
	8.0	130	100	100

### Wall Mount use | 수평취부



Lead	Payload(kg)	A	B	C
5	3.0	200	200	300
	5.0	170	150	250
	8.0	80	80	200
10	3.0	200	200	300
	5.0	150	150	250
	8.0	80	80	150

### Vertical use | 수직취부

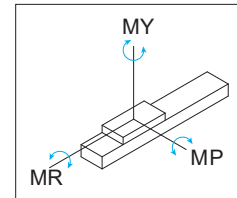


Lead	Payload(kg)	A	B	C
5	3.0	250	—	250
	4.0	200	—	200
	6.0	150	—	150
10	2.0	200	—	200
	4.0	175	—	175
	5.0	150	—	150

# KGB050B-PL/PR

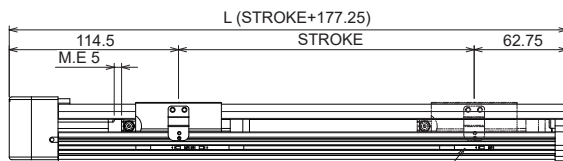
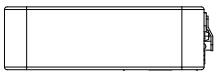
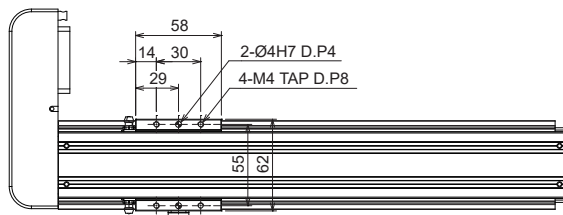


## Static Allowable Moment(N·m) 정적 허용 모멘트

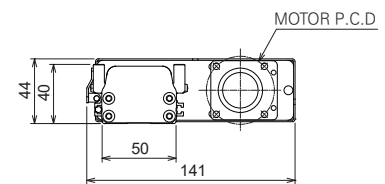


Mp	My	Mr
75	75	240

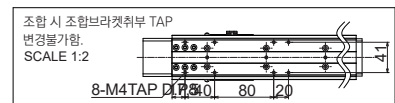
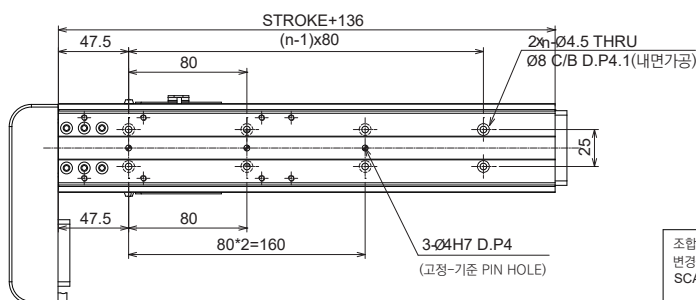
## Dimension [mm] | 치수도



무접점 MAGNET SENSOR 3EA  
외부표시 - On시 LED발광



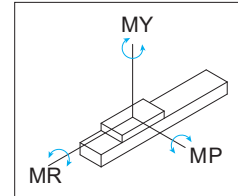
- \* 모터에 따라 P.C.D 및 전장이 변경될 수 있습니다.
- \* 모터부착도면 필요 시, 별도도면요청 바랍니다.
- \* 본 도면은 L-type이며, R-type과 호환이 가능합니다.



# KGB050B-PB

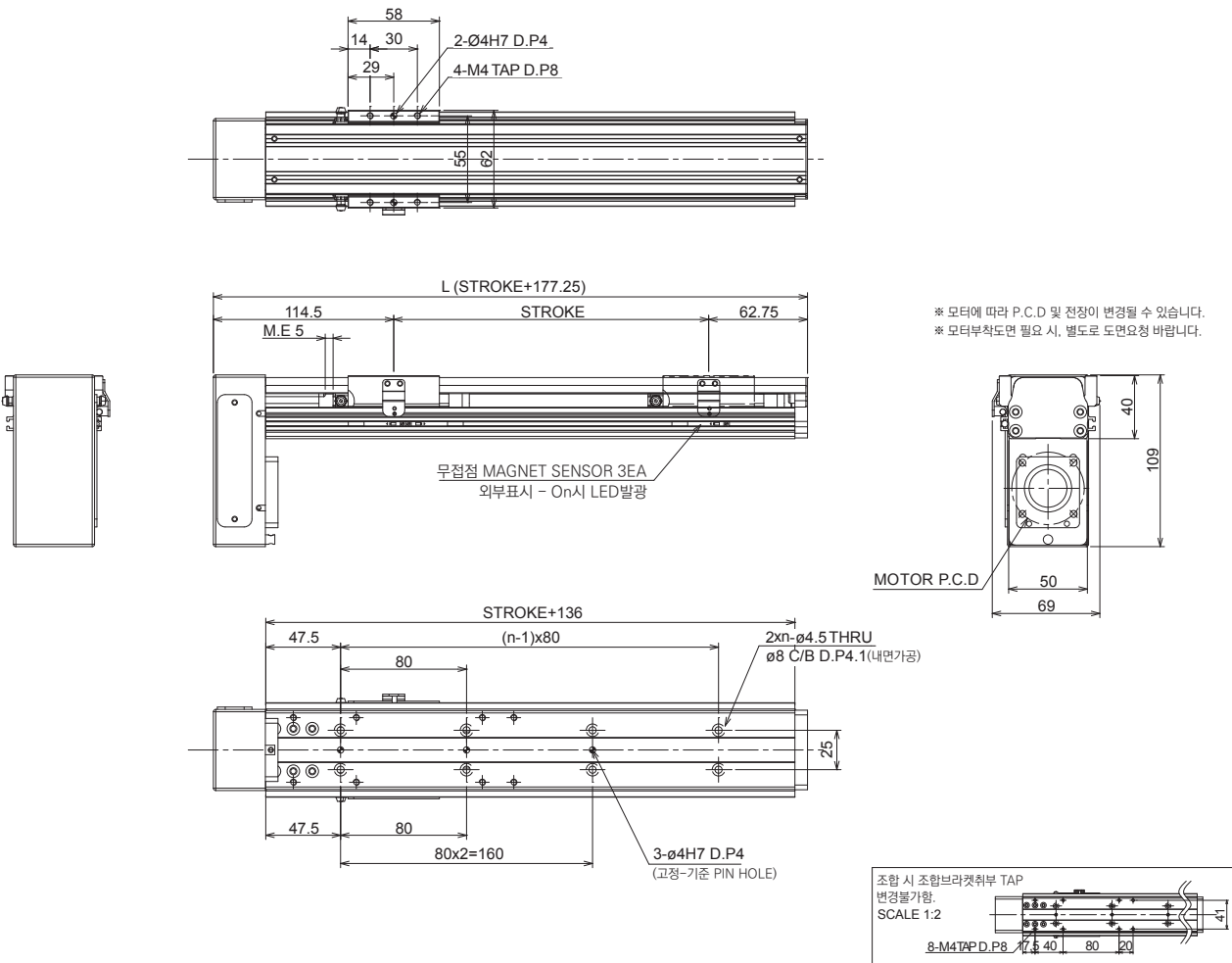


## Static Allowable Moment(N·m) 정적 허용 모멘트



Mp	My	Mr
75	75	240

## Dimension [mm] | 치수도



# KGB Actuator

## KGB060B-SS

### Common Specifications | 공통사양

Body Size(mm)	KGB060B
Repeatability(mm)	전조: $\pm 0.005$ , 연삭: $\pm 0.003$
Ball Screw	$\varnothing 12$
Robot Color	Black
Life in traveled distance	15000km or 15000hr

AC Servo Motor(W)	100		200(직결형만)	
Ball Screw( $\varnothing \times$ Lead)	1205	1210	1205	1210
Payload(Hor. kg)	20.0	15.0	30.0	25.0
Payload(Ver. kg)	12.0	10.0	18.0	11.0
Max Speed(mm/s)	250	500	250	500

※ 표준에서 벗어난 모터 사용에 대해서는 협의가 필요합니다.

※ Consultation is required for use of motors outside the standard

### Max Speed by Stroke | 이송거리별 최고속도 / Weight | 무게

Ball Screw		Stroke(mm) & Speed(mm/sec)										
DIA	Lead	50st	100st	150st	200st	250st	300st	400st	500st	600st	700st	800st
$\varnothing 12$	5	250									190	170
	10	500									430	350
Weight Without Motor(kg)	S(직)	1.5	1.7	1.9	2.1	2.2	2.4	2.6	2.9	3.1	3.4	3.8

※ Z축 리드 20 적용 시 협의 필요합니다

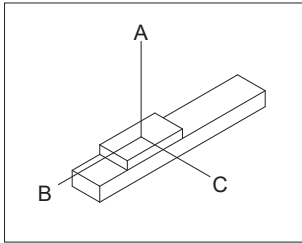
※ Consultation is required when applying Z-axis lead 20

※ 600 스트로크 이상에서는 고정형 엔드하우징이 적용됩니다

※ A Fixed end housing is used for 600 strokes or more

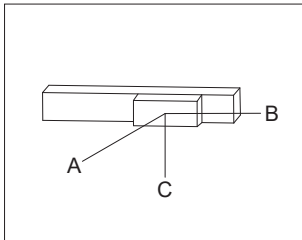
### Allowable Overhang Distance(mm) | 허용 이격 거리

#### Horizontal use | 수평취부



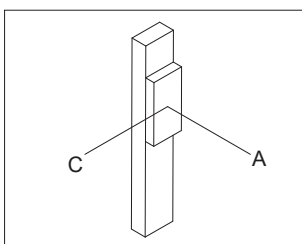
Lead	Payload(kg)	A	B	C
5	9.0	250	250	250
	11.0	200	200	200
	13.0	150	150	150
10	7.0	230	230	230
	9.0	180	180	180
	11.0	120	120	120

#### Wall Mount use | 수평취부



Lead	Payload(kg)	A	B	C
5	8.0	250	240	250
	10.0	200	190	230
	12.0	150	140	200
10	7.0	240	240	250
	9.0	190	190	230
	11.0	140	140	200

#### Vertical use | 수직취부

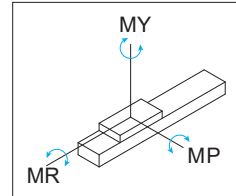


Lead	Payload(kg)	A	B	C
5	4.0	280	—	280
	6.0	230	—	230
	8.0	180	—	180
10	3.0	280	—	280
	4.0	230	—	230
	—	—	—	—

# KGB060B-SS

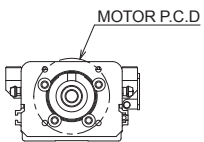
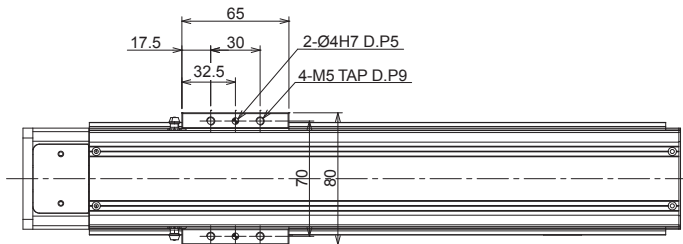


## Static Allowable Moment(N·m) 정적 허용 모멘트

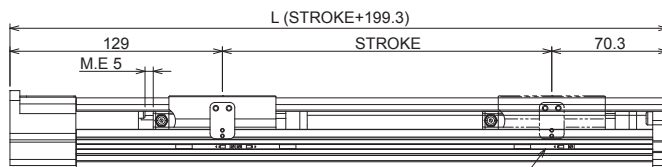


Mp	My	Mr
136	136	392

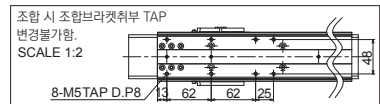
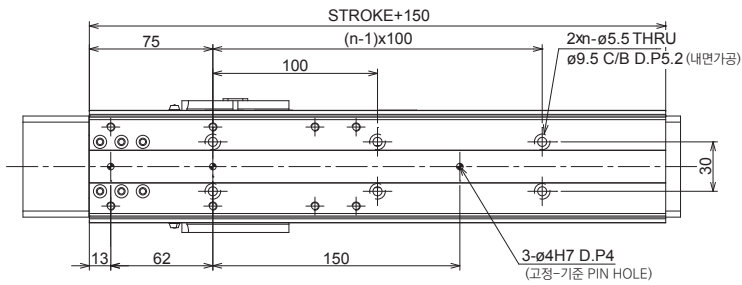
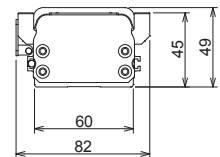
## Dimension [mm] | 치수도



\* 모터에 따라 P.C.D 및 전장이 변경될 수 있습니다.  
\* 모터부착도면 필요 시, 별도로 도면요청 바랍니다.



무접점 MAGNET SENSOR 3EA  
외부표시 - On시 LED발광





# KGB Actuator

## KGB060B-PL/PR/PB

### Common Specifications | 공통사양

Body Size(mm)	KGB060B
Repeatability(mm)	전조: $\pm 0.005$ , 연삭: $\pm 0.003$
Ball Screw	$\varnothing 12$
Robot Color	Black
Life in traveled distance	15000km or 15000hr

AC Servo Motor(W)	100	
Ball Screw( $\varnothing \times$ Lead)	1205	1210
Payload(Hor. kg)	19.0	14.0
Payload(Ver. kg)	11.0	8.0
Max Speed(mm/s)	250	500

※ 표준에서 벗어난 모터 사용에 대해서는 협의가 필요합니다.

※ Consultation is required for use of motors outside the standard

### Max Speed by Stroke | 이송거리별 최고속도 / Weight | 무게

Ball Screw		Stroke(mm) & Speed(mm/sec)										
DIA	Lead	50st	100st	150st	200st	250st	300st	400st	500st	600st	700st	800st
$\varnothing 12$	5	250									190	170
	10	500									430	350
Weight Without Motor(kg)	P(병)	1.7	1.9	2.2	2.4	2.5	2.7	2.9	3.2	3.4	3.7	4.1

※ Z축 리드 20 적용 시 협의 필요합니다

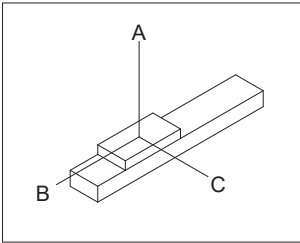
※ Consultation is required when applying Z-axis lead 20

※ 600 스트로크 이상에서는 고정형 엔드하우징이 적용됩니다

※ A Fixed end housing is used for 600 strokes or more

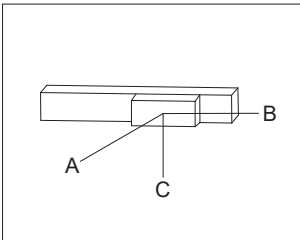
### Allowable Overhang Distance(mm) | 허용 이격 거리

#### Horizontal use | 수평취부



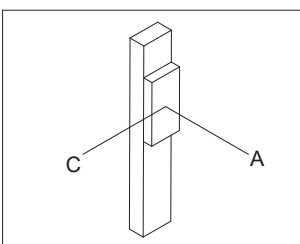
Lead	Payload(kg)	A	B	C
5	9.0	250	250	250
	11.0	200	200	200
	13.0	150	150	150
10	7.0	230	230	230
	9.0	180	180	180
	11.0	120	120	120

#### Wall Mount use | 수평취부



Lead	Payload(kg)	A	B	C
5	8.0	250	240	250
	10.0	200	190	230
	12.0	150	140	200
10	7.0	240	240	250
	9.0	190	190	230
	11.0	140	140	200

#### Vertical use | 수직취부

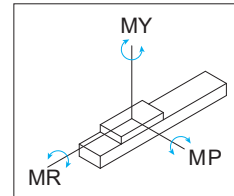


Lead	Payload(kg)	A	B	C
5	4.0	280	—	280
	6.0	230	—	230
	8.0	180	—	180
10	3.0	280	—	280
	4.0	230	—	230
	—	—	—	—

# KGB060B-PL/PR

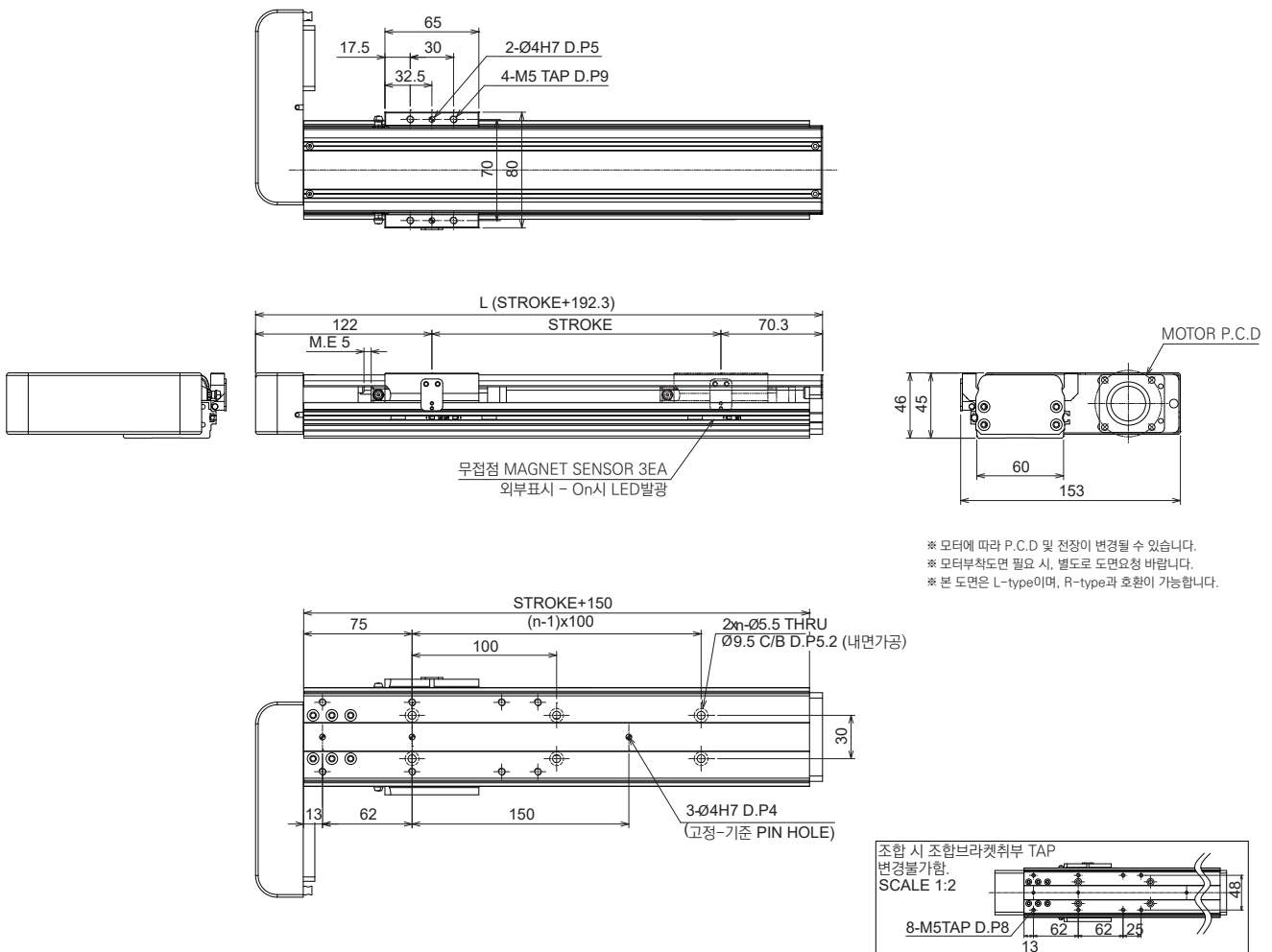


## Static Allowable Moment(N·m) 정적 허용 모멘트



Mp	My	Mr
136	136	392

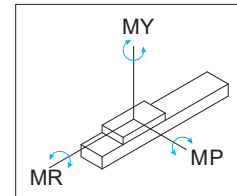
## Dimension [mm] | 치수도



# KGB060B-PB

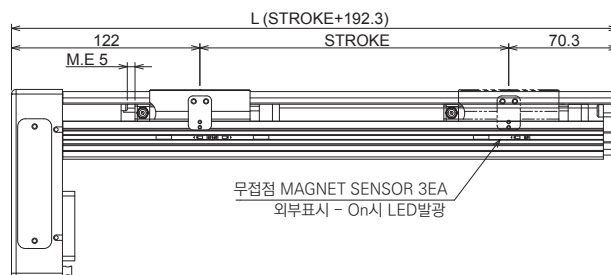
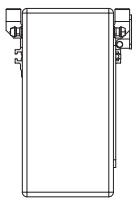
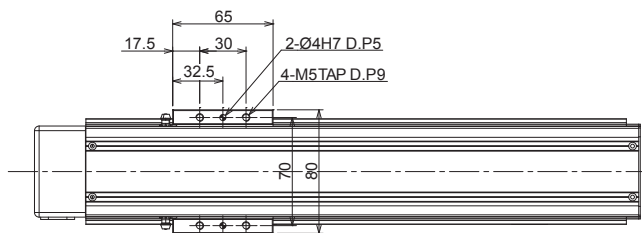


## Static Allowable Moment(N·m) 정적 허용 모멘트

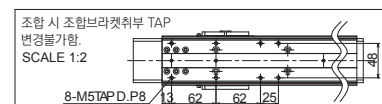
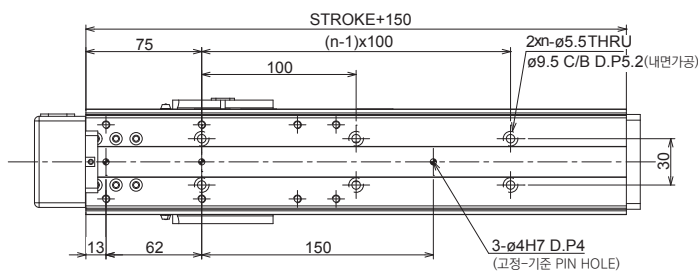
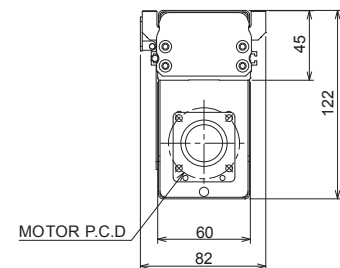


Mp	My	Mr
136	136	392

## Dimension [mm] | 치수도



\* 모터에 따라 P.C.D 및 전장이 변경될 수 있습니다.  
\* 모터부착도면 필요 시, 별도로 도면요청 바랍니다.



조립 시 조합브라켓취부 TAP  
변경불가함.  
SCALE 1:2

## Common Specifications | 공통사양

Body Size(mm)	KGB090B
Repeatability(mm)	전조: ±0.008, 연삭: ±0.005
Ball Screw	Ø15
Robot Color	Black
Life in traveled distance	15000km or 15000hr

AC Servo Motor(W)	200			400	
Ball Screw(ΦxLead)	1505	1510	1520	1510	1520
Payload(Hor. kg)	40.0	38.0	25.0	43.0	38.0
Payload(Ver. kg)	25.0	13.0	7.0	25.0	13.0
Max Speed(mm/s)	250	500	1000	500	1000

※ 표준에서 벗어난 모터 사용에 대해서는 협의가 필요합니다.  
 ※ Consultation is required for use of motors outside the standard

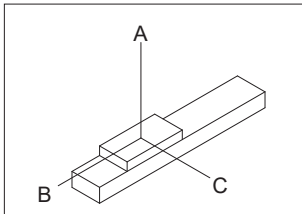
## Max Speed by Stroke | 이송거리별 최고속도 / Weight | 무게

Ball Screw		Stroke(mm) & Speed(mm/sec)									
DIA	Lead	100st	200st	300st	400st	500st	600st	700st	800st	900st	1000st
Ø15	10	500						450	380	300	250
	20	1000						900	750	600	500
Weight Without Motor(kg)	S(직)	3.4	3.9	4.5	5.1	5.7	6.3	6.9	7.5	8.1	8.7

- ※ Z축 리드 20 적용 시 협의 필요합니다
- ※ Consultation is required when applying Z-axis lead 20
- ※ 800 스트로크 이상에서는 고정형 엔드하우징이 적용됩니다
- ※ A Fixed end housing is used for 800 strokes or more
- ※ 500 스트로크 이상에서 고속구동 시 연삭 볼 스크류를 추천합니다
- ※ Grinding ball Screws are recommended for high speed operation over 500 strokes

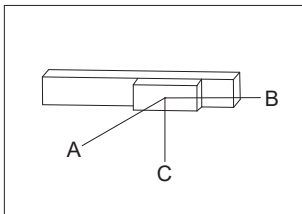
## Allowable Overhang Distance(mm) | 허용 이격 거리

### Horizontal use | 수평취부



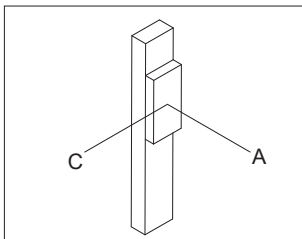
Lead	Payload(kg)	A	B	C
10	20.0	300	270	270
	25.0	250	230	230
	30.0	200	200	170
20	20.0	270	250	250
	25.0	230	200	200
	30.0	170	150	150

### Wall Mount use | 수평취부



Lead	Payload(kg)	A	B	C
10	20.0	270	280	300
	25.0	230	260	270
	30.0	180	190	250
20	20.0	250	250	300
	25.0	220	220	270
	30.0	190	190	250

### Vertical use | 수직취부

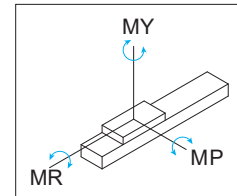


Lead	Payload(kg)	A	B	C
05	10.0	300	—	250
	15.0	250	—	200
	18.0	200	—	150
10	5.0	300	—	250
	8.0	250	—	200
	12.0	200	—	150
20	5.0	300	—	250
	6.0	250	—	200
	7.0	200	—	150

# KGB090B-SS

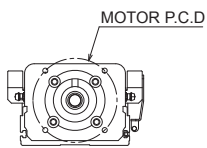
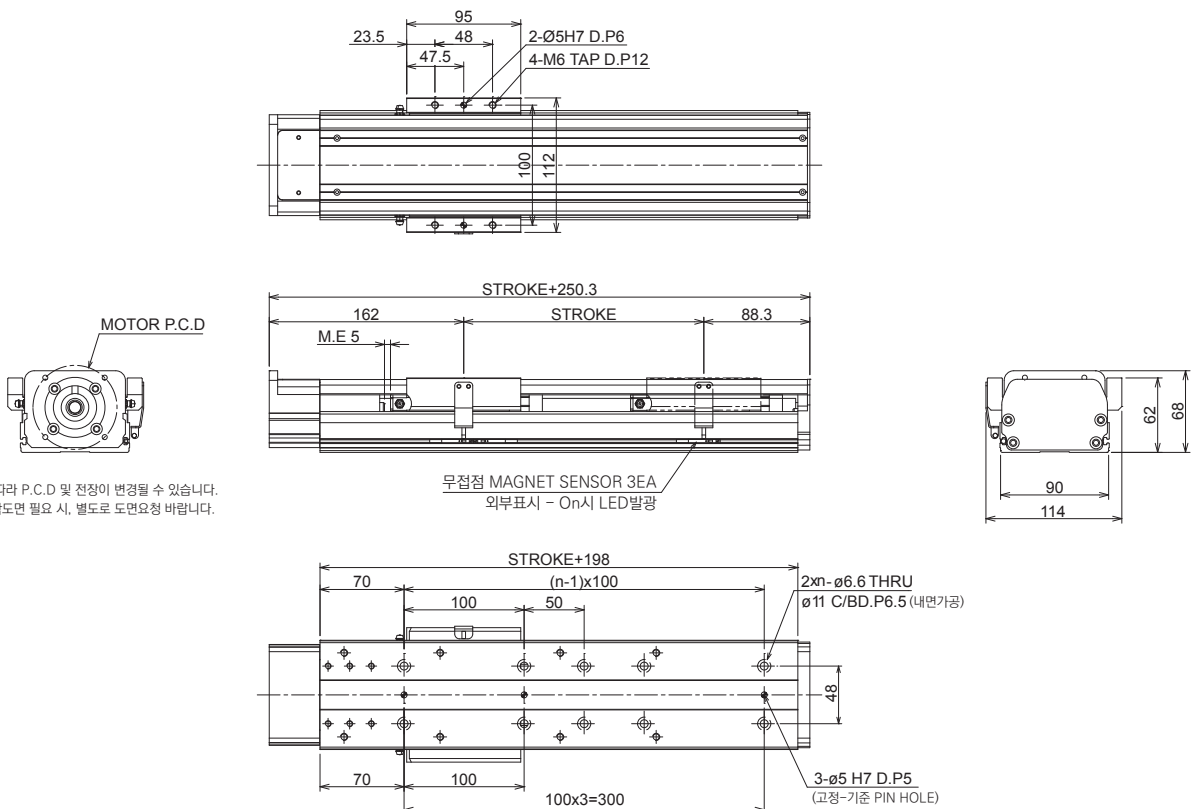


## Static Allowable Moment(N·m) 정적 허용 모멘트

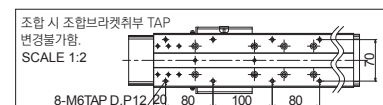


Mp	My	Mr
331	331	975

## Dimension [mm] | 치수도



\* 모터에 따라 P.C.D 및 전장이 변경될 수 있습니다.  
\* 모터부착도면 필요 시, 별도로 도면요청 바랍니다.



## Common Specifications | 공통사양

Body Size(mm)	KGB090B
Repeatability(mm)	전조: ±0.008, 연삭: ±0.005
Ball Screw	Ø15
Robot Color	Black
Life in traveled distance	15000km or 15000hr

AC Servo Motor(W)	200			400	
Ball Screw(ØxLead)	1505	1510	1520	1510	1520
Payload(Hor. kg)	38.0	37.0	22.0	40.0	35.0
Payload(Ver. kg)	24.0	12.0	7.0	24.0	13.0
Max Speed(mm/s)	250	500	1000	500	1000

※ 표준에서 벗어난 모터 사용에 대해서는 협의가 필요합니다.  
 ※ Consultation is required for use of motors outside the standard

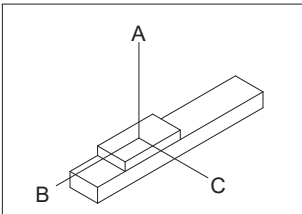
## Max Speed by Stroke | 이송거리별 최고속도 / Weight | 무게

Ball Screw		Stroke(mm) & Speed(mm/sec)									
DIA	Lead	100st	200st	300st	400st	500st	600st	700st	800st	900st	1000st
Ø15	10	500						450	380	300	250
	20	1000						900	750	600	500
Weight Without Motor(kg)	P(병)	3.7	4.2	4.8	5.4	6.0	6.6	7.3	7.8	8.4	9.1

※ Z축 리드 20 적용 시 협의 필요합니다  
 ※ Consultation is required when applying Z-axis lead 20  
 ※ 800 스트로크 이상에서는 고정형 엔드하우징이 적용됩니다  
 ※ A Fixed end housing is used for 800 strokes or more  
 ※ 500 스트로크 이상에서 고속구동 시 연삭 볼 스크류를 추천합니다  
 ※ Grinding ball Screws are recommended for high speed operation over 500 strokes

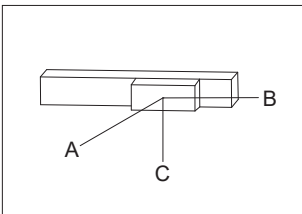
## Allowable Overhang Distance(mm) | 허용 이격 거리

### Horizontal use | 수평취부



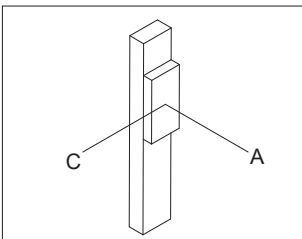
Lead	Payload(kg)	A	B	C
10	20.0	300	270	270
	25.0	250	230	230
	30.0	200	200	170
20	20.0	270	250	250
	25.0	230	200	200
	30.0	170	150	150

### Wall Mount use | 수평취부



Lead	Payload(kg)	A	B	C
10	20.0	270	280	300
	25.0	230	260	270
	30.0	180	190	250
20	20.0	250	250	300
	25.0	220	220	270
	30.0	190	190	250

### Vertical use | 수직취부

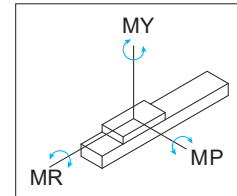


Lead	Payload(kg)	A	B	C
05	10.0	300	—	250
	15.0	250	—	200
	18.0	200	—	150
10	5.0	300	—	250
	8.0	250	—	200
	12.0	200	—	150
20	5.0	300	—	250
	6.0	250	—	200
	7.0	200	—	150

# KGB090B-PL/PR

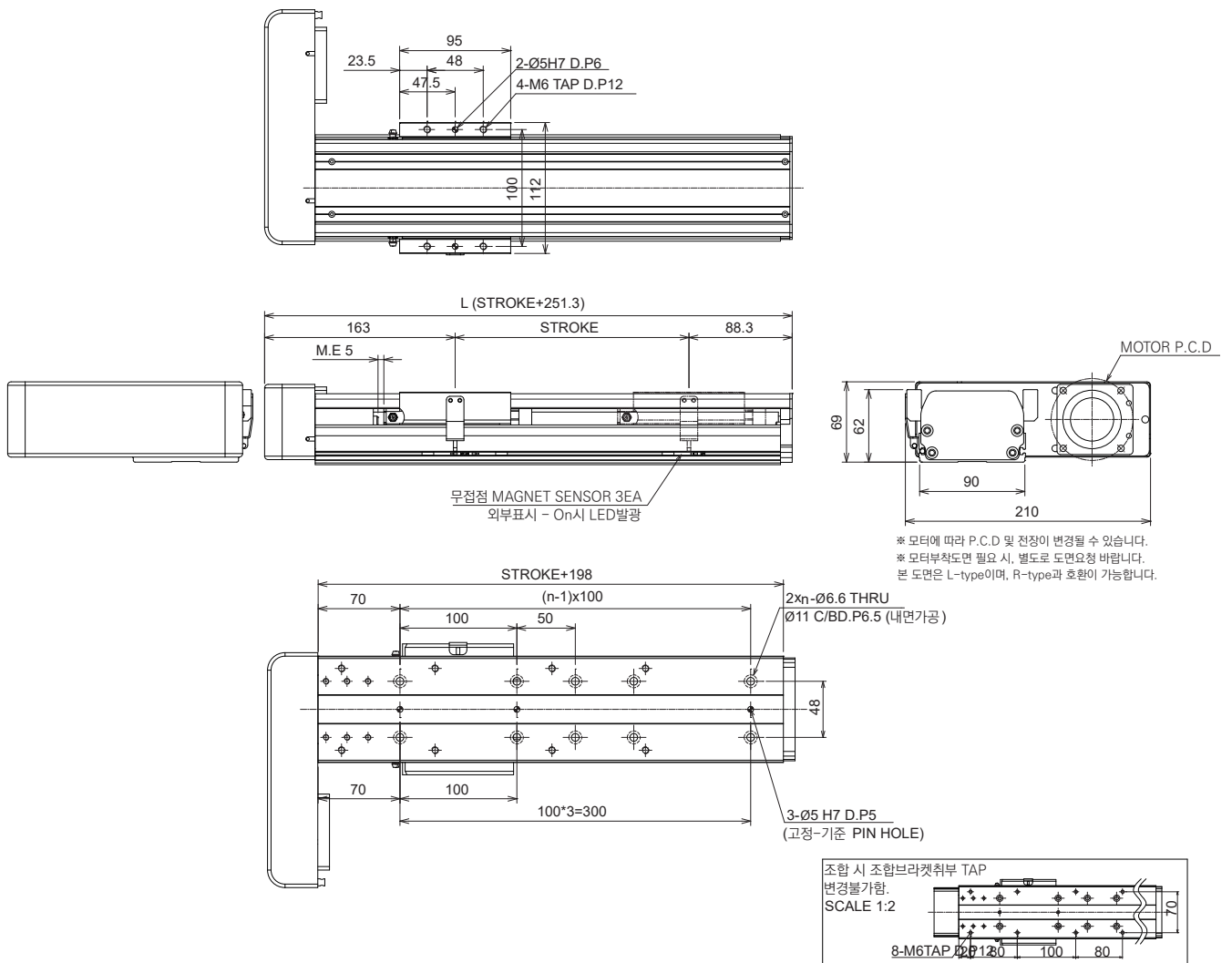


## Static Allowable Moment(N·m) 정적 허용 모멘트



Mp	My	Mr
331	331	975

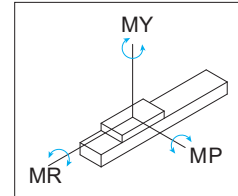
## Dimension [mm] | 치수도



# KGB090B-PB

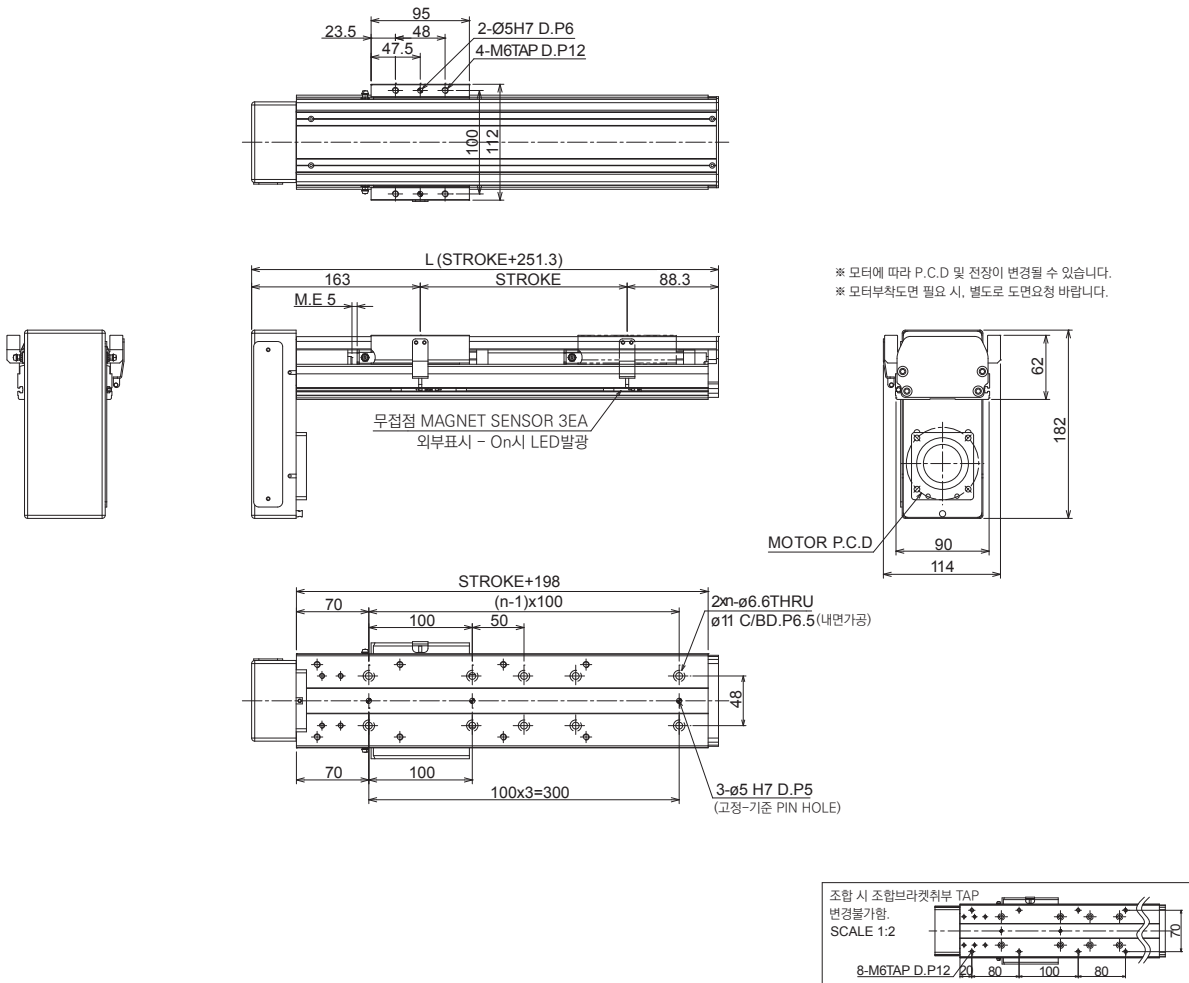


## Static Allowable Moment(N·m) 정적 허용 모멘트



Mp	My	Mr
331	331	975

## Dimension [mm] | 치수도



\* 모터에 따라 P.C.D 및 진장이 변경될 수 있습니다.  
\* 모터부착도면 필요 시, 별도로 도면요청 바랍니다.



# KGB Actuator

## KGB120B-SS

### Common Specifications | 공통사양

Body Size(mm)	KGB120B
Repeatability(mm)	전조: $\pm 0.008$ , 연삭: $\pm 0.005$
Ball Screw	$\varnothing 15$ ( $\varnothing 20$ )
Robot Color	Black
Life in traveled distance	15000km or 15000hr

AC Servo Motor(W)	400			750		
Ball Screw( $\varnothing \times$ Lead)	1505	1510	1520	1510	1520	
Payload(Hor. kg)	60.0	55.0	40.0	60.0	45.0	
Payload(Ver. kg)	38.0	25.0	13.0	35.0	18.0	
Max Speed(mm/s)	250	500	1000	500	1000	

※ 표준에서 벗어난 모터 사용에 대해서는 협의가 필요합니다.

※ Consultation is required for use of motors outside the standard

### Max Speed by Stroke | 이송거리별 최고속도 / Weight | 무게

Ball Screw		Stroke(mm) & Speed(mm/sec)											
DIA	Lead	100st	200st	300st	400st	500st	600st	700st	800st	900st	1000st	1100st	1200st
$\varnothing 15$	10	500						460	380	300	250	220	200
	20	1000						900	750	600	500	450	400
Weight Without Motor(kg)	S(직)	6.5	7.7	8.5	9.4	10.6	11.4	12.5	13.2	14.4	15.5	16.6	17.5

※ Z축 리드 20 적용 시 협의 필요합니다

※ Consultation is required when applying Z-axis lead 20

※ 800 스트로크 이상에서는 고정형 엔드하우징이 적용됩니다

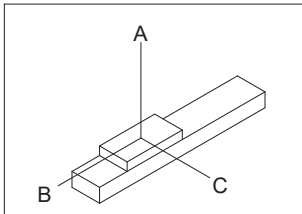
※ A Fixed end housing is used for 800 strokes or more

※ 500 스트로크 이상에서 고속구동 시 연삭 볼 스크류를 추천합니다

※ Grinding ball Screws are recommended for high speed operation over 500 strokes

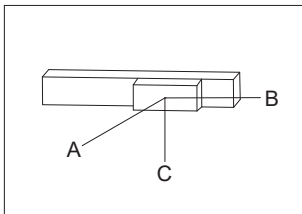
### Allowable Overhang Distance(mm) | 허용 이격 거리

#### Horizontal use | 수평취부



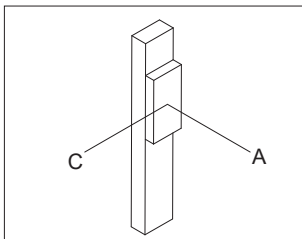
Lead	Payload(kg)	A	B	C
10	25.0	400	350	380
	35.0	300	250	270
	45.0	200	150	170
20	20.0	400	350	380
	30.0	300	250	270
	40.0	200	150	170

#### Wall Mount use | 수평취부



Lead	Payload(kg)	A	B	C
10	20.0	350	350	400
	30.0	300	300	350
	40.0	250	250	300
20	18.0	350	350	400
	25.0	300	300	350
	30.0	250	250	300

#### Vertical use | 수직취부

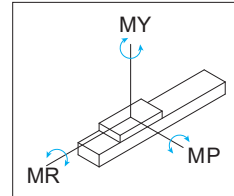


Lead	Payload(kg)	A	B	C
05	15.0	350	—	300
	20.0	300	—	250
	25.0	200	—	250
10	5.0	400	—	350
	10.0	300	—	300
	15.0	200	—	250
20	4.0	350	—	300
	6.0	300	—	250

# KGB120B-SS

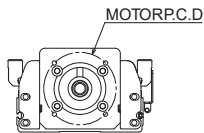
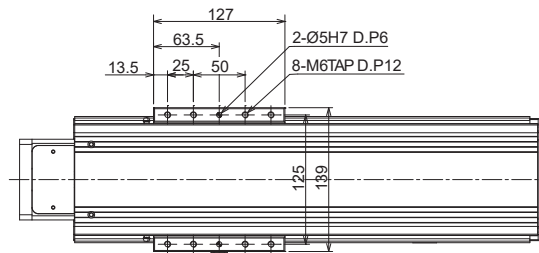


## Static Allowable Moment(N·m) 정적 허용 모멘트

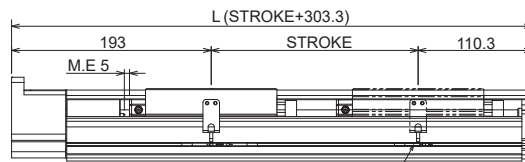


Mp	My	Mr
569	569	1,649

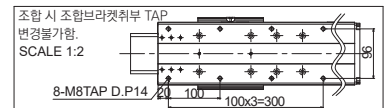
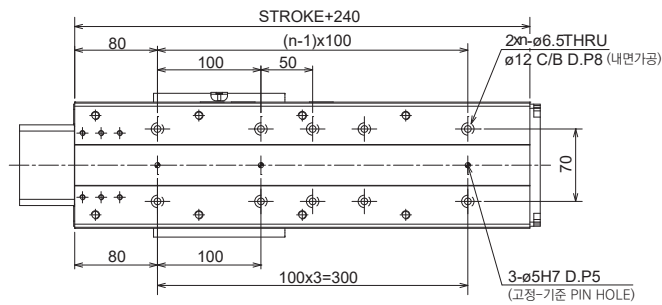
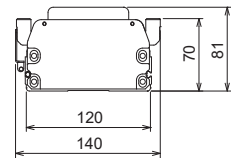
## Dimension [mm] | 치수도



\* 모터에 따라 P.C.D 및 전장이 변경될 수 있습니다.  
\* 모터부착도면 필요 시, 별도로 도면요청 바랍니다.



무접점 MAGNET SENSOR 3EA  
외부표시 - On시 LED발광



# KGB Actuator

## KGB120B-PL/PR/PB

### Common Specifications | 공통사양

Body Size(mm)	KGB120B
Repeatability(mm)	전조: $\pm 0.008$ , 연삭: $\pm 0.005$
Ball Screw	$\varnothing 15$ ( $\varnothing 20$ )
Robot Color	Black
Life in traveled distance	15000km or 15000hr

AC Servo Motor(W)	400			750		
Ball Screw( $\varnothing \times$ Lead)	1505	1510	1520	1510	1520	
Payload(Hor. kg)	58.0	50.0	38.0	58.0	43.0	
Payload(Ver. kg)	35.0	23.0	12.0	33.0	16.0	
Max Speed(mm/s)	250	500	1000	500	1000	

※ 표준에서 벗어난 모터 사용에 대해서는 협의가 필요합니다.

※ Consultation is required for use of motors outside the standard

### Max Speed by Stroke | 이송거리별 최고속도 / Weight | 무게

Ball Screw		Stroke(mm) & Speed(mm/sec)											
DIA	Lead	100st	200st	300st	400st	500st	600st	700st	800st	900st	1000st	1100st	1200st
$\varnothing 15$	10	500						460	380	300	250	220	200
	20	1000						900	750	600	500	450	400
Weight Without Motor(kg)	P(병)	6.8	8.0	8.9	10.1	11.0	11.8	12.9	13.6	14.8	16.0	17.0	17.9

※ Z축 리드 20 적용 시 협의 필요합니다

※ Consultation is required when applying Z-axis lead 20

※ 800 스트로크 이상에서는 고정형 엔드하우징이 적용됩니다

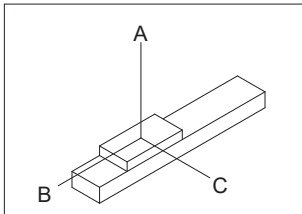
※ A Fixed end housing is used for 800 strokes or more

※ 500 스트로크 이상에서 고속구동 시 연삭 볼 스크류를 추천합니다

※ Grinding ball Screws are recommended for high speed operation over 500 strokes

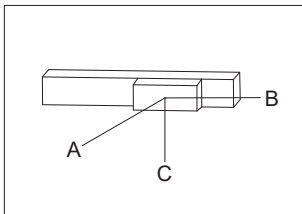
### Allowable Overhang Distance(mm) | 허용 이격 거리

#### Horizontal use | 수평취부



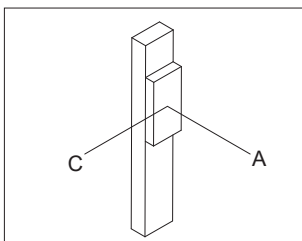
Lead	Payload(kg)	A	B	C
10	25.0	400	350	380
	35.0	300	250	270
	45.0	200	150	170
20	20.0	400	350	380
	30.0	300	250	270
	40.0	200	150	170

#### Wall Mount use | 수평취부



Lead	Payload(kg)	A	B	C
10	20.0	350	350	400
	30.0	300	300	350
	40.0	250	250	300
20	18.0	350	350	400
	25.0	300	300	350
	30.0	250	250	300

#### Vertical use | 수직취부

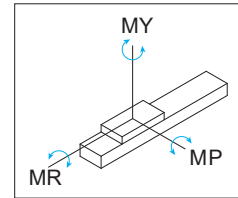


Lead	Payload(kg)	A	B	C
05	15.0	350	—	300
	20.0	300	—	250
	25.0	200	—	250
10	5.0	400	—	350
	10.0	300	—	300
	15.0	200	—	250
20	5.0	350	—	300
	7.0	300	—	250

# KGB120B-PL/PR

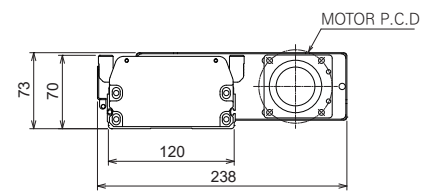
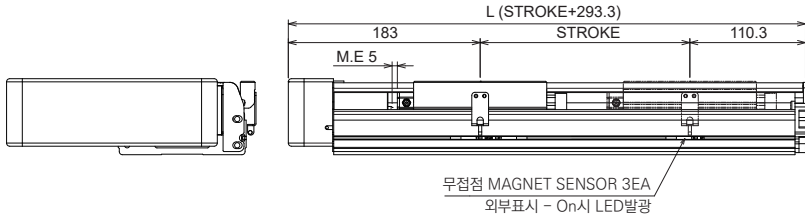
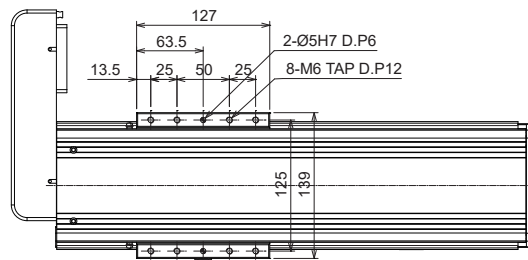


## Static Allowable Moment(N·m) 정적 허용 모멘트

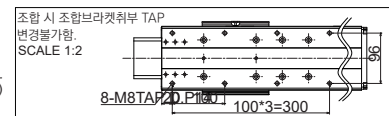
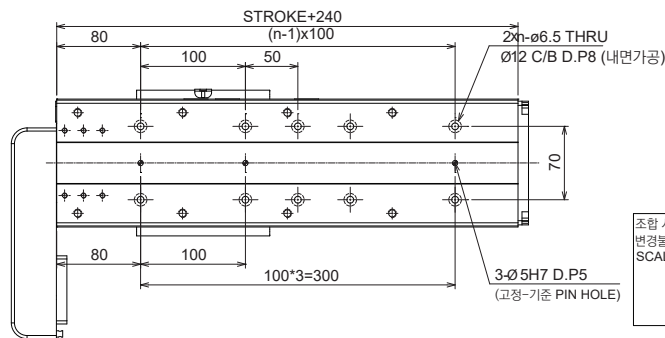


Mp	My	Mr
569	569	1,649

## Dimension [mm] | 치수도



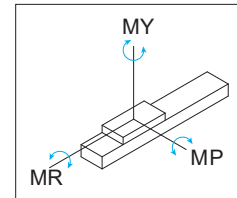
\* 모터에 따라 P.C.D 및 전장이 변경될 수 있습니다.  
\* 모터부착도면 필요 시, 별도로 도면요청 바랍니다.  
\* 본 도면은 L-type이며, R-type과 호환이 가능합니다.



# KGB120B-PB

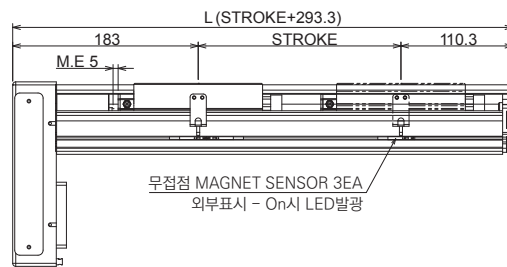
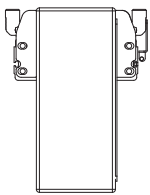
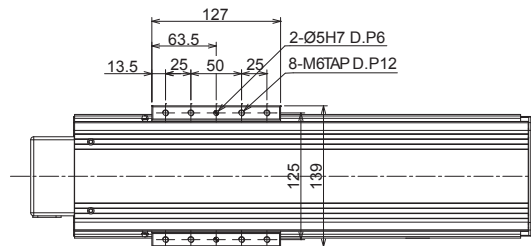


## Static Allowable Moment(N·m) 정적 허용 모멘트

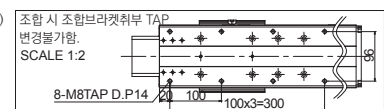
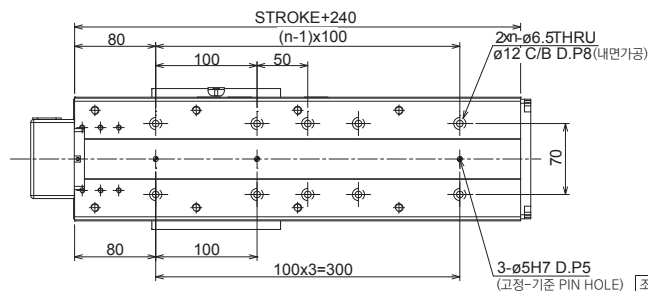
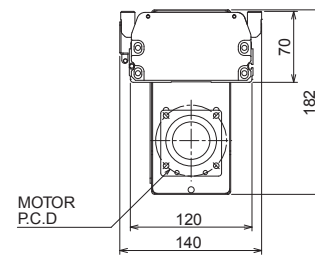


Mp	My	Mr
569	569	1,649

## Dimension [mm] | 치수도



\* 모터에 따라 P.C.D 및 전장이 변경될 수 있습니다.  
\* 모터부착도면 필요 시, 별도로 도면요청 바랍니다.



## Common Specifications | 공통사양

Body Size(mm)	KGB160B
Repeatability(mm)	전조: ±0.008, 연삭: ±0.005
Ball Screw	Ø20
Robot Color	Black
Life in traveled distance	15000km or 15000hr

AC Servo Motor(W)	400			750		
Ball Screw(ΦxLead)	2005	2010	2020	2010	2020	
Payload(Hor. kg)	65.0	65.0	55.0	70.0	65.0	
Payload(Ver. kg)	40.0	30.0	20.0	40.0	26.0	
Max Speed(mm/s)	250	500	1000	500	1000	

※ 표준에서 벗어난 모터 사용에 대해서는 협의가 필요합니다.  
 ※ Consultation is required for use of motors outside the standard

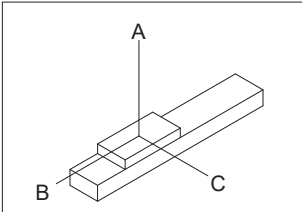
## Max Speed by Stroke | 이송거리별 최고속도 / Weight | 무게

Ball Screw		Stroke(mm) & Speed(mm/sec)													
DIA	Lead	100st	200st	300st	400st	500st	600st	700st	800st	900st	1000st	1100st	1200st	1300st	1400st
Ø20	10	500						460	380	300	250	220	200	180	160
	20	1000						900	750	600	500	450	400	350	320
Weight Without Motor(kg)	S(직)	8.9	9.8	11.0	12.2	13.3	14.5	15.7	16.9	18.1	19.3	20.5	21.6	22.8	23.9

※ Z축 리드 20 적용 시 협의 필요합니다  
 ※ Consultation is required when applying Z-axis lead 20  
 ※ 500 스트로크 이상에서 고속구동 시 연삭 볼 스크류를 추천합니다  
 ※ Grinding ball Screws are recommended for high speed operation over 500 strokes

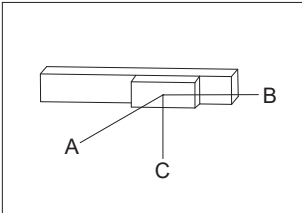
## Allowable Overhang Distance(mm) | 허용 이격 거리

### Horizontal use | 수평취부



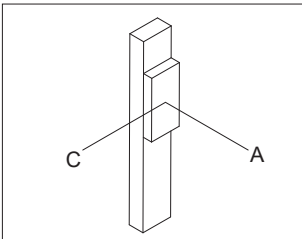
Lead	Payload(kg)	A	B	C
10	40.0	500	400	400
	50.0	400	300	300
	70.0	250	200	200
20	30.0	450	400	400
	50.0	300	350	300
	60.0	250	200	200

### Wall Mount use | 수평취부



Lead	Payload(kg)	A	B	C
10	30.0	450	450	500
	40.0	350	350	400
	50.0	250	250	300
20	30.0	400	400	450
	40.0	350	350	400
	50.0	250	250	300

### Vertical use | 수직취부

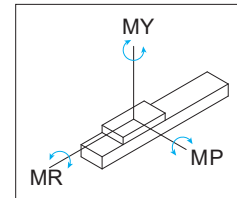


Lead	Payload(kg)	A	B	C
05	25.0	400	—	350
	35.0	300	—	300
	40.0	200	—	250
10	15.0	400	—	400
	20.0	300	—	300
	25.0	200	—	207
20	10.0	400	—	400
	17.0	300	—	300
	25.0	200	—	200

## KGB160B-SS

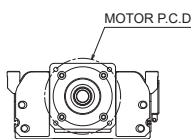
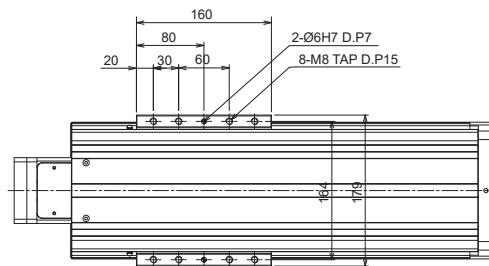


■ Static Allowable Moment(N·m)  
정적 허용 모멘트

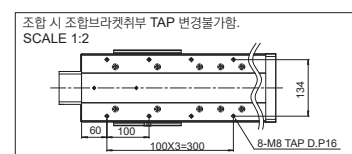
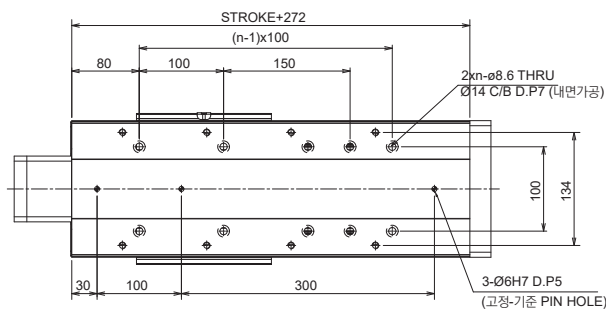
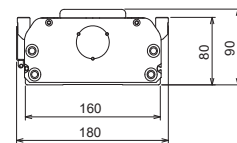
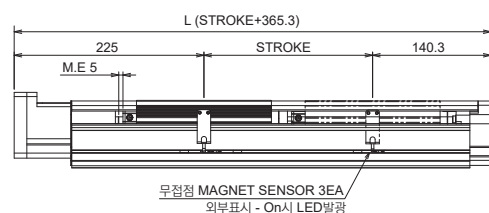


Mp	My	Mr
853	853	2,860

■ Dimension [mm] | 치수도



\* 모터에 따라 P.C.D 및 전장이 변경될 수 있습니다.  
\* 모터부착도면 필요 시, 별도로 도면요청 바랍니다.



## Common Specifications | 공통사양

Body Size(mm)	KGB160B
Repeatability(mm)	전조: ±0.008, 연삭: ±0.005
Ball Screw	∅20
Robot Color	Black
Life in traveled distance	15000km or 15000hr

AC Servo Motor(W)	400			750	
Ball Screw(∅xLead)	2005	2010	2020	2010	2020
Payload(Hor. kg)	60.0	60.0	50.0	60.0	55.0
Payload(Ver. kg)	40.0	30.0	20.0	40.0	26.0
Max Speed(mm/s)	250	500	1000	500	1000

※ 표준에서 벗어난 모터 사용에 대해서는 협의가 필요합니다.  
 ※ Consultation is required for use of motors outside the standard

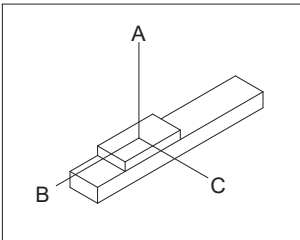
## Max Speed by Stroke | 이송거리별 최고속도 / Weight | 무게

Ball Screw		Stroke(mm) & Speed(mm/sec)													
DIA	Lead	100st	200st	300st	400st	500st	600st	700st	800st	900st	1000st	1100st	1200st	1300st	1400st
∅20	10	500						440	380	300	250	220	200	180	160
	20	1000						900	750	600	500	450	400	350	320
Weight Without Motor(kg)	P(병)	9.9	10.8	12.1	13.3	14.5	15.7	16.9	18.1	19.2	20.5	21.6	22.7	24.2	25.3

※ Z축 리드 20 적용 시 협의 필요합니다  
 ※ Consultation is required when applying Z-axis lead 20  
 ※ 500 스트로크 이상에서 고속구동 시 연삭 볼 스크류를 추천합니다  
 ※ Grinding ball Screws are recommended for high speed operation over 500 strokes

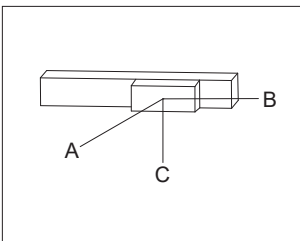
## Allowable Overhang Distance(mm) | 허용 이격 거리

### Horizontal use | 수평 바닥취부



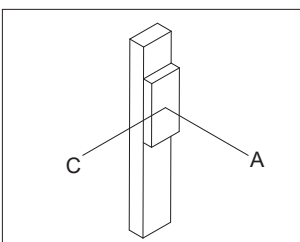
Lead	Payload(kg)	A	B	C
10	40.0	828	230	345
	50.0	690	160	242
	70.0	575	150	219
20	30.0	720	200	300
	50.0	600	140	210
	60.0	500	130	190

### Wall Mount use | 수평 벽면취부



Lead	Payload(kg)	A	B	C
10	30.0	221	150	598
	45.0	112	70	336
	60.0	75	50	253
20	30.0	192	130	520
	45.0	97	60	292
	50.0	65	40	220

### Vertical use | 수직취부



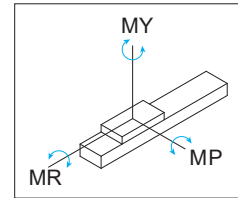
Lead	Payload(kg)	A	B	C
10	25.0	207	—	207
	35.0	127	—	127
	40.0	92	—	92
20	25.0	200	—	200
	30.0	110	—	110



# KGB160B-PL/PR

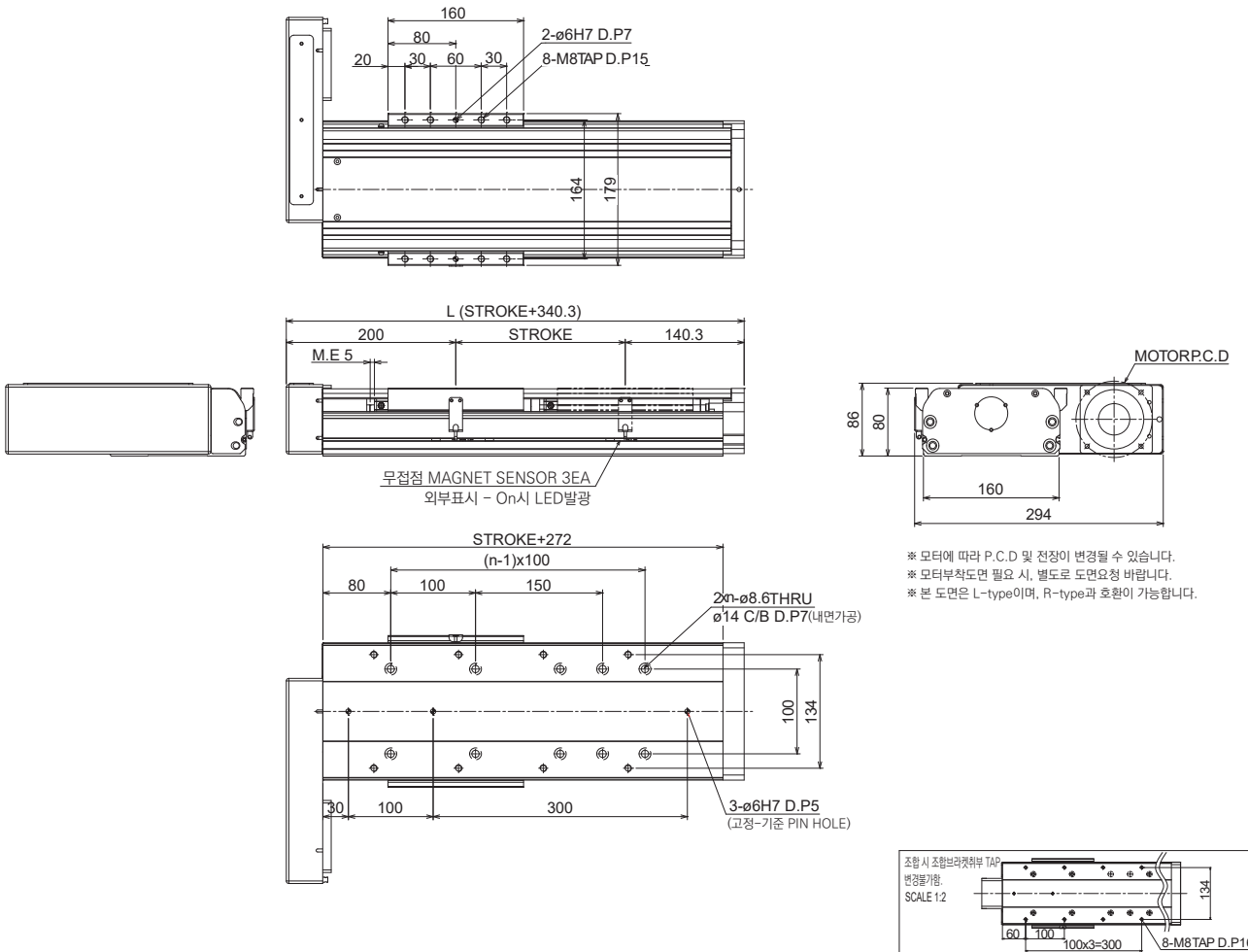


## Static Allowable Moment(N·m) 정적 허용 모멘트



Mp	My	Mr
853	853	2,860

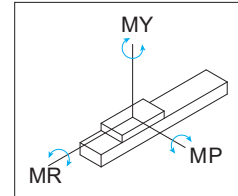
## Dimension [mm] | 치수도



# KGB160B-PB



## Static Allowable Moment(N·m) 정적 허용 모멘트



Mp	My	Mr
853	853	2,860

## Dimension [mm] | 치수도

